

Education for Sustainable Development

Holistic learning: Head, Heart and Hands



Understanding Sustainability:
Our society's challenges, possible solutions



Transformational Experiences:
Inspiration, indignation, collective action



Taking Action:
Volunteering, projects, making a difference



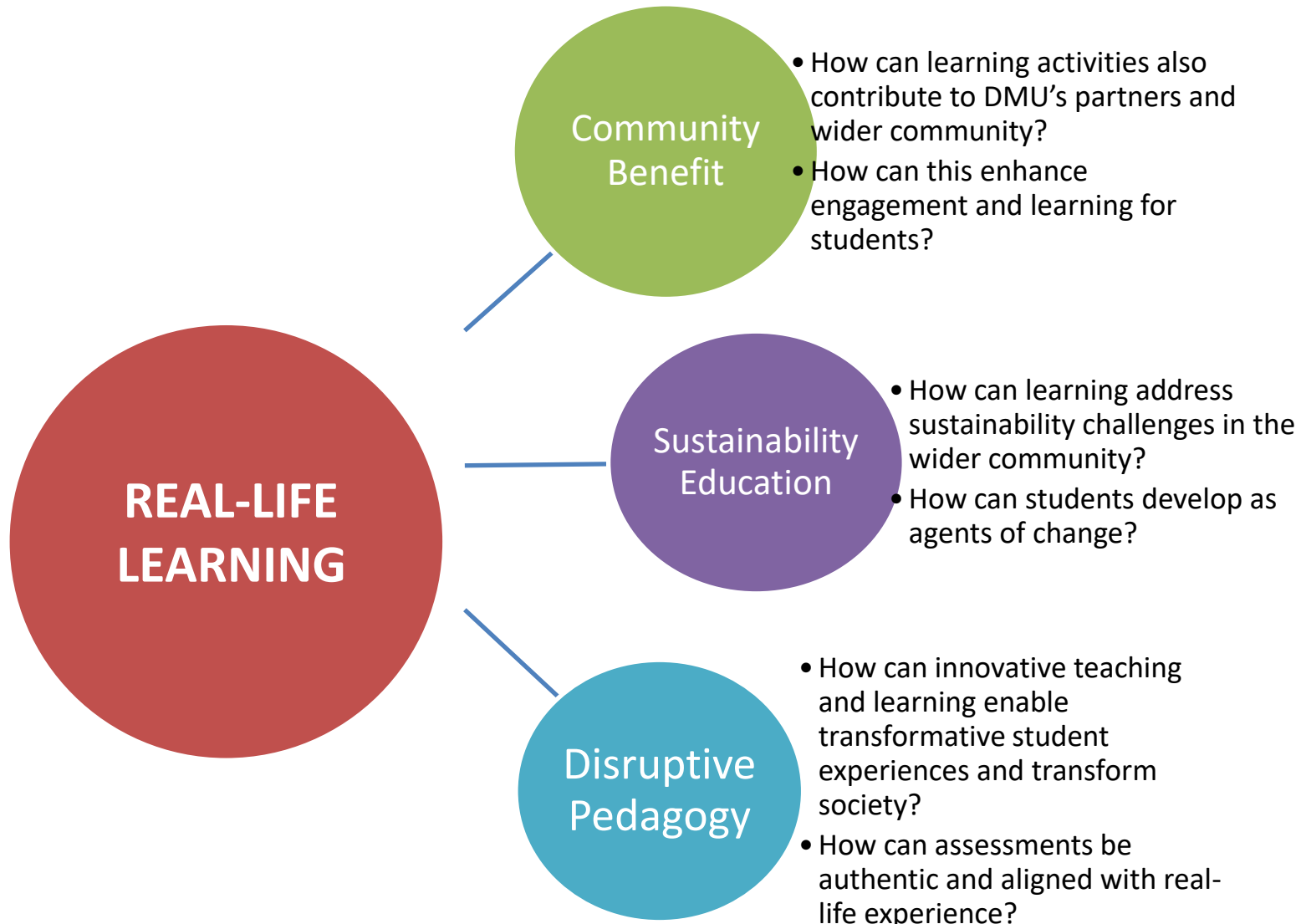
Competencies to Act:
Motivation, self-confidence,
values, big-picture thinking,
group-working skills

DMU's Commitments

“We will equip students and staff with an understanding of **the challenges of sustainability and sustainable development**, and will approach learning, teaching and assessment mindful of the **opportunities to contribute locally and globally** to the public good and environmental futures as well as of our impact on a resource-limited world.”

DMU University Learning Teaching and Assessment Strategy, 2018

Three Starting Points



Real-Life Learning: A Working Definition

“Real-Life Learning at DMU integrates real-world experiences, contribution and societal challenges creating mutual benefit – for students’ learning and wider society”

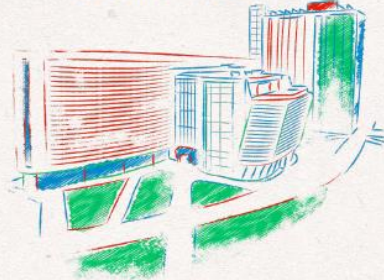
Fit with new DMU strategy



OUR MISSION

Discovering gateways of opportunity that empower students, staff and our community to create a fairer society.

THE EMPOWERING UNIVERSITY



OUR VISION

Creating a community of participation, fairness and collective responsibility; transforming individual lives and championing a fair and sustainable society.



OUR VALUES

We support each other, we value difference and are honest and compassionate towards others. Together we will be courageous in exploring possibilities, breaking down barriers and re-imagining new horizons.



OUR STRATEGY

LEARNING FOR LIFE

- **Flexible learning** for students of any age, fostering a love of learning and knowledge, delivered through our innovative Education 2030 programme.
- **Learning beyond the classroom** provided through practical experiences in local, national and global arenas.
- **Creative approaches to learning delivery** that ground students in digital literacy, and are focused on employability, building entrepreneurial and life skills.

KNOWLEDGE CREATION

- **Fostering interdisciplinary research** that has impact: building on individual skills and knowledge for collective impact.
- **Integrated approach to knowledge exchange:** sharing and learning with external organisations, industry and the community.
- **Nurturing the next generation** of diverse researchers through developmental programmes.

EMPOWERING PEOPLE

- **Delivering an engaged experience** for all students; building their confidence and fostering belonging and fulfilment so students can learn well and live well.
- **Championing diversity** of our students and staff, a nurturing community which is inclusive and dynamic, drawing on our diversity to challenge the status quo and to drive change.
- **Campus collectives** around themes which bring together research, teaching, staff interest and external engagements.

PARTNERSHIPS WITH PURPOSE

- **Leicester local:** creating strategic partnerships to enrich the business and cultural community and support social and economic needs.
- **Creative by design:** develop national and global partnerships that create resilient, self-motivated and inquisitive graduates, transform relationships and impact local, national and global communities.
- **Valuing social responsibility** through our voluntary support by staff and students which helps local and regional initiatives.

CROSS CUTTING THEMES:

EQUALITY FOR ALL

SUSTAINABILITY AND THE SUSTAINABLE DEVELOPMENT GOALS

DIGITAL TRANSFORMATION

FINANCIAL STRENGTH

SUCCESS

Closing the Leicester skills gap; ensuring graduates access employment opportunities which meet their ambitions.

International reputation for our research themes; our research makes a difference to lives.

A diverse, engaged community; no pay or awarding gaps; positive health and wellbeing amongst students and staff.

Addressing local and regional needs; realising national and global opportunities of mutual benefit.

Fit with new DMU strategy

THE EMPOWERING UNIVERSITY

OUR MISSION

Discovering gateways of opportunity that empower students, staff and our community to create a fairer society.

OUR VISION

Creating a community of participation, fairness and collective responsibility; transforming individual lives and championing a fair and sustainable society.

OUR VALUES

We support each other, we value difference and are honest and compassionate towards others. Together we will be courageous in exploring possibilities, breaking down barriers and re-imagining new horizons.

OUR STRATEGY

LEARNING FOR LIFE

- **Flexible learning** for students of any age, fostering a love of learning and knowledge, delivered through our innovative Education 2030 programme.
- **Learning beyond the classroom** provided through practical experiences in local, national and global arenas.
- **Creative approaches to learning delivery** that ground students in digital literacy, and are focused on employability, building entrepreneurial and life skills.

KNOWLEDGE CREATION

- **Fostering interdisciplinary research** that has impact: building on individual skills and knowledge for collective impact.
- **Integrated approach to knowledge exchange:** sharing and learning with external organisations, industry and the community.
- **Nurturing the next generation** of diverse researchers through developmental programmes.

EMPOWERING PEOPLE

- **Delivering an engaged experience** for all students; building their confidence and fostering belonging and fulfilment so students can learn well and live well.
- **Championing diversity** of our students and staff, a nurturing community which is inclusive and dynamic, drawing on our diversity to challenge the status quo and to drive change.
- **Campus collectives** around themes which bring together research, teaching, staff interest and external engagements.

PARTNERSHIPS WITH PURPOSE

- **Leicester local:** creating strategic partnerships to enrich the business and cultural community and support social and economic needs.
- **Creative by design:** develop national and global partnerships that create resilient, self-motivated and inquisitive graduates, transform relationships and impact local, national and global communities.
- **Valuing social responsibility** through our voluntary support by staff and students which helps local and regional initiatives.

CROSS CUTTING THEMES:

EQUALITY FOR ALL

SUSTAINABILITY AND THE SUSTAINABLE DEVELOPMENT GOALS

DIGITAL TRANSFORMATION

FINANCIAL STRENGTH

SUCCESS

Closing the Leicester skills gap; ensuring graduates access employment opportunities which meet their ambitions.

International reputation for our research themes; our research makes a difference to lives.

A diverse, engaged community; no pay or awarding gaps; positive health and wellbeing amongst students and staff.

Addressing local and regional needs; realising national and global opportunities of mutual benefit.

Four approaches to Real-Life engagement

